



**Bullock, Bennett & Associates, LLC**

---

www.bbaengineering.com

165 N. Lampasas St. • Bertram, Texas 78605 • (512) 355-9198

## **POST CLOSURE PLAN - ADDENDUM NO. 2**

### **Martin Lake Steam Electric Station - Ash Pond Area Rusk County, Texas**

Submitted to:

**Luminant Generation Company LLC**

Submitted by:

**BULLOCK, BENNETT & ASSOCIATES, LLC**

165 N. Lampasas Street

Bertram, Texas 78605

(512) 355-9198

Texas Professional Engineering Firm No. 8542

Texas Geoscience Firm No. 50127

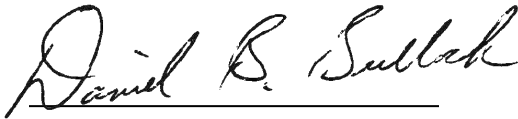
February 2024

BBA Project No. 24643-01-2024

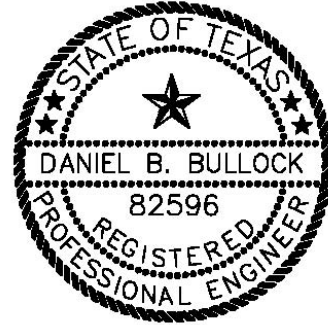
## PROFESSIONAL CERTIFICATION

Bullock, Bennett & Associates, LLC (BBA) is certifying this document to address the Texas Commission on Environmental Quality (TCEQ) Notice of Deficiency (NOD) No. 3 comments for the Martin Lake Steam Electric Station issued December 22, 2023. The information submitted is, to the best of my knowledge and belief, true, accurate, and complete.

I hereby certify that Addendum No.2 to the Post Closure Plan for the Ash Ponds at the Martin Lake Steam Electric Station has been prepared in accordance with the requirements of 40 C.F.R. §257.102(b).



Daniel B. Bullock, P.E.  
Principal Engineer  
Bullock, Bennett & Associates, LLC



Date 2/26/2024

## **TABLE OF CONTENTS**

LIST OF APPENDICES .....	II
DOCUMENT REVISION RECORD .....	III
1.0 INTRODUCTION.....	1
2.0 ASH POND AREA POST CLOSURE PLAN REVISIONS.....	1
2.1 REVISIONS TO POST CLOSURE PLAN, ASH POND AREA, FIGURE 3 – PROPOSED FINAL COVER GRADING PLAN.....	1
3.0 REFERENCES.....	2

## **LIST OF APPENDICES**

APPENDIX A	POST CLOSURE PLAN, ASH POND AREA, FIGURE 3
------------	--

## DOCUMENT REVISION RECORD

Issue No.	Date	Details of Revisions
Revision 0	October 2016	Original Document
Addendum 1	December 2022	Updated configuration of liner systems for Ash Ponds, updated configuration of final cap/cover system for Ash Ponds and updated Facility contact information.
Addendum 2	February 2024	Revised Figure 3, Proposed Final Cover Grading Plan, to add statement that final elevations will be provided during closure of the CCR unit; signed, sealed and dated by Texas Licensed P.E..

## 1.0 INTRODUCTION

On behalf of Luminant Generation Company LLC (Luminant), Bullock, Bennett & Associates, LLC (BBA) has prepared this Addendum No. 2 to the Post Closure Plan for the East Ash Pond (EAP), West Ash Pond (WAP), and New Scrubber Pond (NSP) (collectively referred to as the “Ash Ponds”) located at the Martin Lake Steam Electric Station (MLSES) in Rusk County, Texas (hereafter, the “Site”). Coal Combustion Residuals (CCR) including flue gas desulfurization (FGD) wastewater and bottom ash generated as part of MLSES operation are managed in the Ash Ponds. The Ash Ponds are regulated as Existing CCR Impoundments under 40 C.F.R. §257, Subpart D (the “CCR Rule”), which has been adopted by the State of Texas under 30 T.A.C. §352.

The original Ash Ponds Post Closure Plan (PBW, 2016) and Post Closure Plan Addendum No. 1 (WSP Golder, 2022) was prepared in October 2016 and December 2022, respectively, in accordance with 40 C.F.R. §257.102(b) and placed in the MLSES operating record in accordance with 40 C.F.R. §257.105(h)(10). This Addendum No. 2 updates the Post Closure Plan to incorporate the changes described in Section 2.0.

## **2.0 ASH POND AREA POST CLOSURE PLAN REVISIONS**

The following revisions were made to the Ash Pond Area Post Closure Plan in Addendum 2.

### **2.1 REVISIONS TO POST CLOSURE PLAN, ASH POND AREA, FIGURE 3 – PROPOSED FINAL COVER GRADING PLAN**

Ash Pond Area Figure 3 was revised with the signature and seal of a Texas Licensed P.E. and dated accordingly. Additionally, a statement was added to the drawing stating that final elevations for the CCR unit would be provided during closure. The revised drawing can be found in Appendix A of this Addendum.

### **3.0 REFERENCES**

Pastor, Behling & Wheeler, LLC (PBW), 2016. CCR Post Closure Plan – Bottom Ash Ponds and New Scrubber Pond, Martin Lake Steam Electric Station. October.

WSP Golder, 2022. CCR Post Closure Plan Addendum No. 1 – Martin Lake Steam Electric Station – Ash Ponds. December.

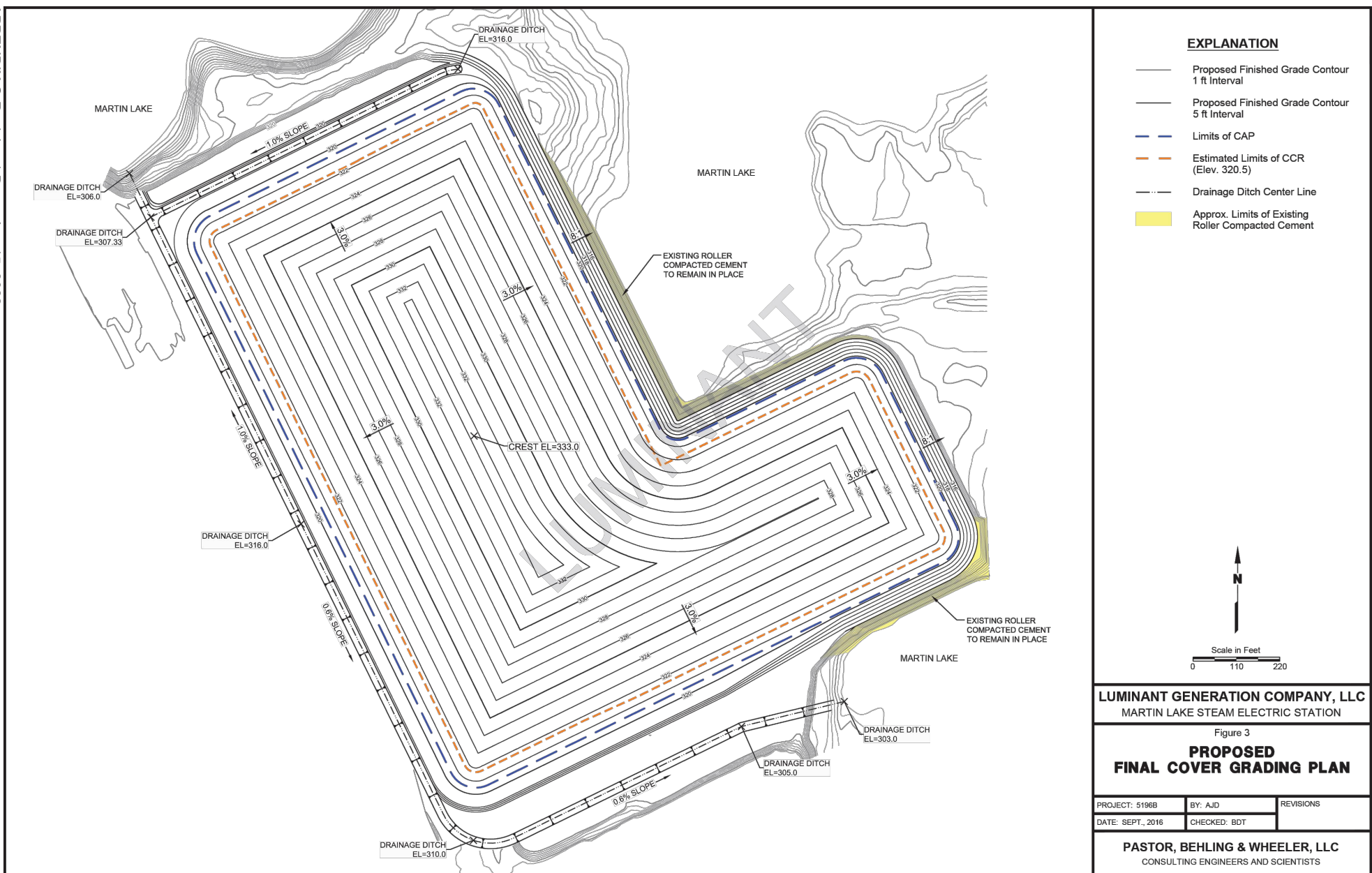
**APPENDIX A**

---

**Post Closure Plan, Ash Pond Area, Figure 3**



APPENDIX G-Revision 1 December 15, 2022



**EXPLANATION**

- Proposed Finished Grade Contour 1 ft Interval
- Proposed Finished Grade Contour 5 ft Interval
- Limits of CAP
- Estimated Limits of CCR (Elev. 320.5)
- Drainage Ditch Center Line
- Approx. Limits of Existing Roller Compacted Cement



LUMINANT GENERATION COMPANY, LLC  
MARTIN LAKE STEAM ELECTRIC STATION

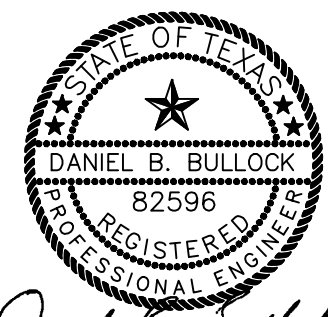
Figure 3  
**PROPOSED FINAL COVER GRADING PLAN**

PROJECT: 5196B	BY: AJD	REVISIONS
DATE: SEPT., 2016	CHECKED: BDT	

PASTOR, BEHLING & WHEELER, LLC  
CONSULTING ENGINEERS AND SCIENTISTS

**NOTE:**

FINAL ELEVATIONS FOR THE UNIT WILL BE PROVIDED AT CLOSURE.



*Daniel B. Bullock*  
2-8-2024

**Luminant**  
Martin Lake Steam Electric Station  
Figure 3  
**PROPOSED FINAL COVER GRADING PLAN**

PROJECT: 24643	BY: RCAD-RR	DATE: FEB 2024	CHECKED: DBB
----------------	-------------	----------------	--------------

Bullock, Bennett & Associates, LLC  
Engineering and Geoscience  
Texas Registrations: Engineering F-8542, Geoscience 50127